



## Asset Management Services and Export Controls



*Through a diverse range of services and products, we help our clients automate business and data-capture processes. Our efforts were instrumental in developing and implementing solutions for Export Controls and Assets Subject to Special Controls Service within the UK Defence Sector.*

# Services

## Program Management

Camcode Global will manage your entire project from start to finish. We will assess your current asset management and export control processes. Our qualified Project Managers will work with you to devise a strategy to develop policy guidelines or assist in complying with your own policies. Camcode Global can also work with your sub tier suppliers to ensure they are conforming with your policy and standards. Whether you're complying with standards or improving operational processes, Camcode Global will work with you every step of the way. We work with you to determine your project goals, delivery timeframe, potential risks and any writing of updates to your policy to deliver your project successful to performance, time and cost.

## Data Management

Through proven ISO 9001 certified processes, we'll manage and track your data, and assign data elements such as serial numbers for you, while providing exact information for every asset. In addition to helping you format your data for new assets, we can also assist with the verification and validation of existing data.

## Data Reconciliation and Asset Inventory

The goal of the data reconciliation process is to help you make sense of your current asset data. We'll even help you match your data to your inventory items. Camcode Global data reconciliation processes can also be used to cleanse your existing databases and inventory records of any inaccuracies or discrepancies.

## Software and Database Registration

With the experience and knowledge of data management best practices, Camcode Global can help you establish and maintain control of your asset database. Utilizing Automatic Identification and Data Capture, we'll collect accurate and consistent data, and upload or register it to your own database or our AssetFactor® application.

## Engineering and Marking Specifications

Camcode Global examines each asset to be labelled and tracked – reviewing the asset's application surface, available marking area, and its expected operating environment during its operational and maintenance lifecycle. We then provide you with a marking specification for each asset. This assures assets are accurately and consistently marked. Our engineering staff are *Lean Six Sigma* qualified in addition to their professional qualifications.

## Installation and Application

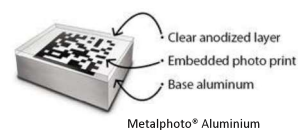
Camcode Global installs our durable asset labels on a wide variety of assets, from hospital and school equipment, to industrial machinery and military equipment. Through an exclusive system and established processes, our installation teams can quickly and accurately locate labels on thousands of assets on-site. Each asset label is scanned and validated during installation, and the data recorded for transfer to your database.



# Products

## Large Range of Asset Marking solutions

Camcode Global has durable barcode labels for every industrial application. Our products perform in the harshest environments, including chemicals, cleaning processes, painting processes, outdoor exposure and temperatures up to 1200°F. We are experts in receiving label requirements electronically, managing multiple shipments of products, and shipping labels to meet JIT production systems. Our ability to manage sequential numbering of multiple shipments is proven and guaranteed, making us the top barcode provider. Our product range includes Metal Barcode Labels, Metalphoto® Aluminium Barcode Labels (a highly durable and long-lasting product unique to Camcode),



Teflon™ on Aluminium Barcode Labels, Extra High Temperature (XHT) Aluminium Barcode Labels, Stainless Steel Barcode Labels, Premium Polyester Barcode Labels, Premium Polyester Plus Barcode Labels, Paint Mask Barcode Labels. Additionally, we have a range of Direct-Part-Marking capabilities.

### AssetFactor®

AssetFactor is a mobile/web asset management application that can be customized to your business and deployed in hours - not days or weeks. AssetFactor automates basic asset management functions such as check-in / check-out, audit, maintenance forms, and more. AssetFactor uses your computer or smartphone's camera as a barcode scanner so you don't need to buy additional hardware. With AssetFactor, you will gain centralized, mobile visibility of all your assets: where they are, who has them and their maintenance status.



- Benefits include:
  - Quick set-up, easy customization
  - Total asset visibility
  - Digitized forms
  - Uses your smartphone camera as a scanner
  - Integrated label store
  - Linking of documents to specific Assets or Asset Group

### Advantages of Using Camcode Global

- **Experience** – Camcode Global manages hundreds of thousands of assets for organisations around the world including the UK Ministry of Defence, Australian Defence Force, Monroe Energy, and Pepperdine University.
- **Coverage** – Camcode Global's reach is worldwide. Our services are always conducted by our own experienced team members and not by outside contractors. We can also pass our expertise on to local or in-country employees.
- **Knowledge Base** – Camcode Global has audited nearly every type of asset imaginable from weapons to servers and we know what type of label, RFID tag or DPM would be best suited for each asset.
- **Methodology** – The Camcode Global team has industry-recognised project management qualifications and follows strict standard operating procedures.
- **Compliance** – The Camcode Global service team understands various compliance requirements around the world and delivers robust solutions to confirm with these requirements / standards, thus always ensuring compliance.
- **Training** – Camcode Global team members have the experience, qualifications and ability to train in-house or local personnel in our effective auditing and asset management practices.
- **Technology** – Camcode Global utilizes bespoke asset management software to manage data requirements.
- **Audit/Account Reconciliation** – Camcode Global's audit software allows post-back to financial or asset management systems. Data is managed outside a client's system, then we provide the clean data for importing.





**Trusted Throughout the World**



**babcock**<sup>TM</sup>



**GENERAL DYNAMICS**  
United Kingdom Limited



**BAE SYSTEMS**  
INSPIRED WORK

**QINETIQ**



The Quorum - Bond Street South, Bristol BS1 3AE - +44 (0) 117 910 2930  
[www.camcodeglobal.com](http://www.camcodeglobal.com)